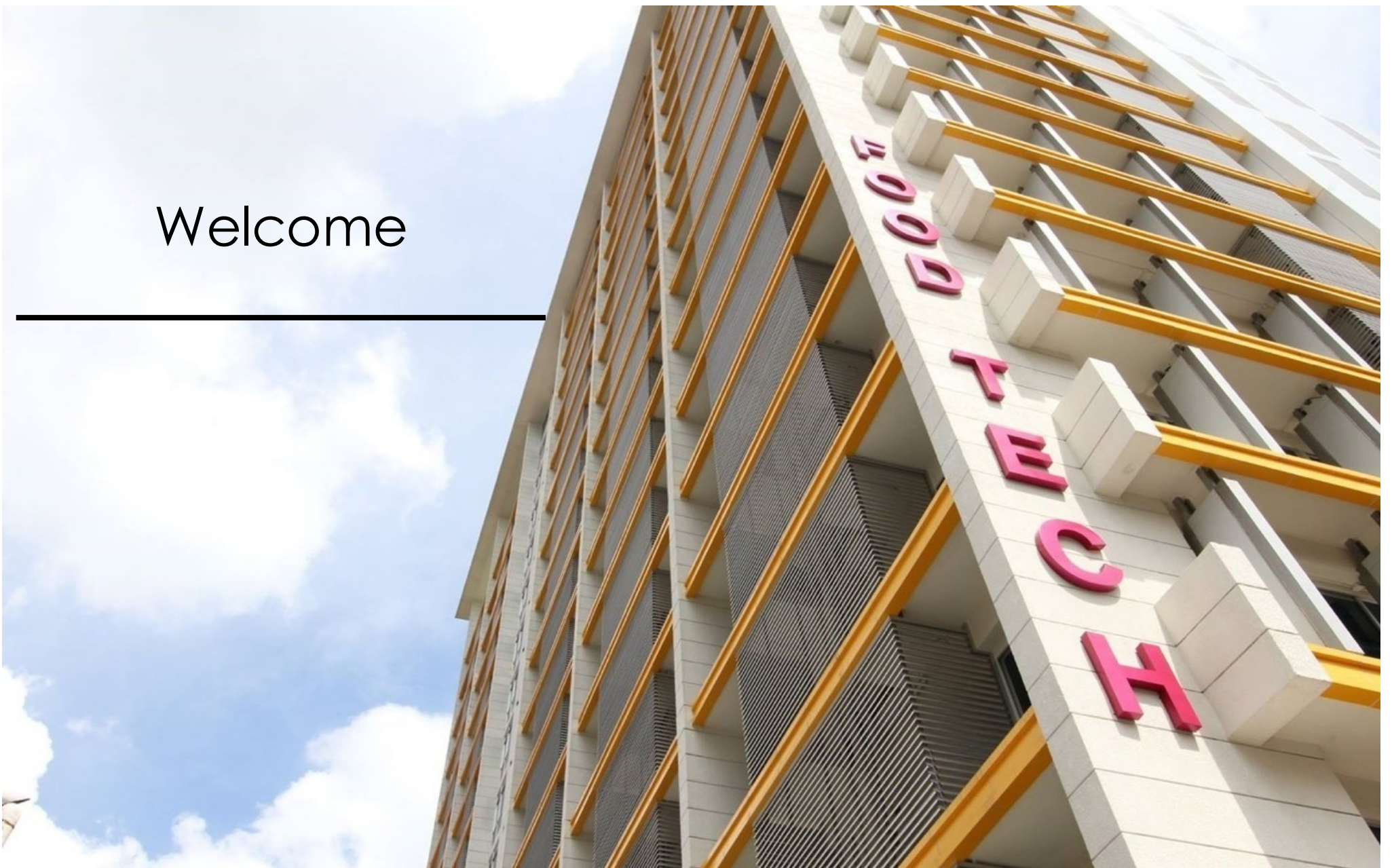


# Welcome

---







# จุฬาลงกรณ์มหาวิทยาลัย

## Chulalongkorn University

Pillar of the Kingdom



100<sup>th</sup> Anniversary Chulalongkorn University





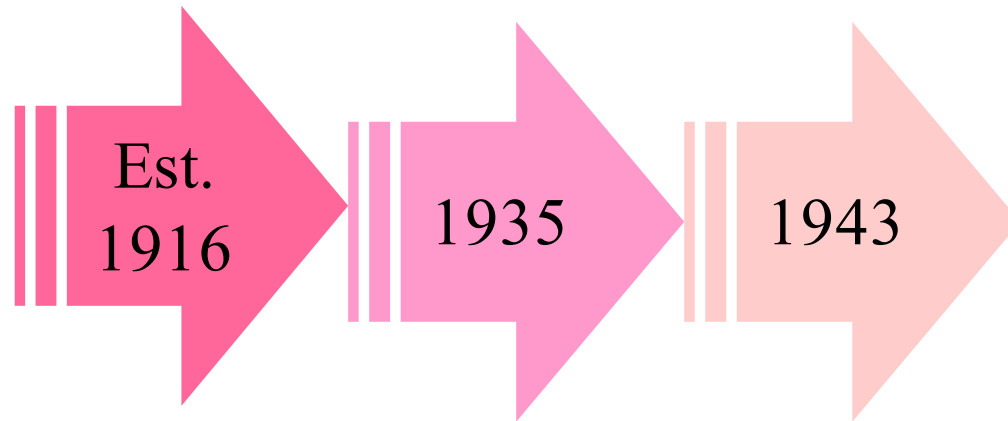
# Faculties, Schools, Colleges and Institutes

## Faculties

1. Faculty of Education
2. Faculty of Psychology
3. Faculty of Dentistry
4. Faculty of Law
5. Faculty of Communication Arts
6. Faculty of Commerce and Accountancy
7. Faculty of Medicine
8. Faculty of Nursing
9. Faculty of Pharmaceutical Science
10. Faculty of Political Science
- 11. Faculty of Science**
12. Faculty of Engineering
13. Faculty of Economics
14. Faculty of Fine and Applied Arts
15. Faculty of Architecture
16. Faculty of Allied Health Science
17. Faculty of Veterinary Science
18. Faculty of Arts
19. Office of Commission on Agricultural Resource Education (OCARE)



# Faculty of Science



## Faculty of Arts and Science

basic science courses for medical and engineering students

## Bachelor of Science

Est. 4 departments

- Biology
- Chemistry,
- Mathematics
- Physics

Today, the Faculty has 14 departments offering both undergraduate + postgraduate studies

1. Biology
2. Chemistry
3. Mathematics and Computer Science
4. Physics
5. Geology
6. Biochemistry
7. Botany
8. Environmental Science
9. Marine Science
10. Microbiology
11. Chemical Technology
12. **Food Technology**
13. Materials Science
14. Imaging and Printing Technology

Est.  
1964





# Department of Food Technology

- ❑ Academic staffs
  - 24 Ph.D. Lecturers
  - 13 supporting staffs
- ❑ Students
  - About 230 (B.Sc., MSc., Ph.D)
- ❑ 4 Curriculums
  - BSc. (Food Technology, Biotechnology)
  - MSc.(Food Technology)
  - MSc.(Food Science and Technology)  
(International Program)
  - Ph.D (Food Technology)





# Erasmus + Program

- ❑ SEA-ABT (South East Asia Academy for Beverage Technology)
  1. University of Natural Resources and Life Sciences, Vienna (BOKU)
  2. University of Teramo (UNITE)
  3. Hochschule Geisenheim (UGH)
  4. Chulalongkorn University (CU)
  5. Kasetsart University (KU)
  6. King Mongkut's Institute of Technology Ladkrabang (KMITL)
  7. PATKOL public Company Limited (PATKOL)





**Students :**  
Indonesia  
Malaysia  
China  
Myanmar  
USA (Thai)





INTERNATIONAL UNION of FOOD SCIENCE AND TECHNOLOGY

Strengthening Global Food Science and Technology for Humanity

Our *Bachelor of Science in Food Technology* Programme  
Department of Food Technology , Chulalongkorn University  
has been internationally accredited  
by **IUFOST**



Other accredited programmes in regional institutes









# Awards

2013



2015



2014



**The 1<sup>st</sup> place**  
**Thailand FoSTAT-Nestle Quiz Bowl**





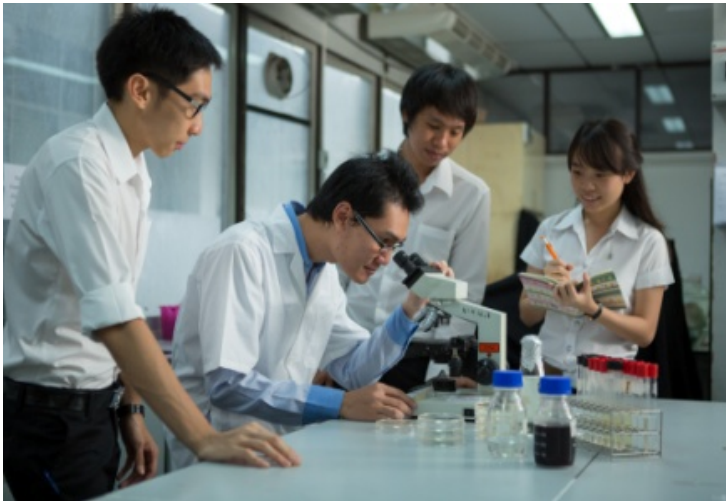
# Research area

Food Processing  
and Engineering

Food Chemistry  
and Nutrition



Food Safety  
and Microbiology



Food packaging

Product development  
and  
innovative ingredients



**หัวหน้าภาควิชา (Head of Department)**

**รศ.ดร. สายวรุฬ ชัยวานิชศิริ**

Saiwarun Chaiwanichsiri, Associate Professor, Ph.D

Email: Saiwarun.c@chula.ac.th

## Food Processing and Engineering



รศ.ดร. สายวรุฬ ชัยวานิชศิริ  
Saiwarun Chaiwanichsiri,  
Associate Professor, Ph.D  
Email: Saiwarun.c@chula.ac.th



รศ.ดร. จิราธรณ์ อนันตกุล  
Jirarat Anuntagool,  
Associate Professor, Ph.D  
Email: Jirarat.t@chula.ac.th



ผศ.ดร. ชิดพงศ์ ประดิษฐ์สุวรรณ  
Chidphong Praditsuwon,  
Assistant Professor, Ph.D.  
Email: pchidphong@hotmail.com



อ.ดร. ศศิภานต์ กุพงษ์ศักดิ์  
Sasikan Kupongsak,  
Lecturer, Ph.D.  
Email: kupongsak@hotmail.com



ผศ.ดร. ชาลีดา บรมพิชัยชาติกุล  
Chaleeda Borompichaichartkul,  
Assistant Professor, Ph.D.  
Email: chaleedab@hotmail.com



อ.ดร. พนิดา งามเชื้อชิด  
Panita Ngamchuachit,  
Lecturer, Ph.D.  
Email: panita.nunn@gmail.com

## Food Chemistry



ศ.ดร. ปราณี อานปรื่อง  
Pranee Anprung,  
Professor, Ph.D.  
Email: Pranee.a@chula.ac.th



ผศ.ดร. เกียรติศักดิ์ ดวงมลาย  
Kiattisak Duangmal,  
Assistant Professor, Ph.D.  
Email: Kiattisak.d@chula.ac.th



อ.ดร. ธนจันทร์ มหาวนิช  
Thanachan Mahawanich,  
Lecturer, Ph.D.  
Email: thanachan\_m@hotmail.com



อ.ดร. ดริช กวักเพ็ญ  
Daris Kuakpetoon,  
Lecturer, Ph.D.  
Email: kdaris@gmail.com



อ.ดร. วนิษา ธานีวงศ์  
Kanitha Tananuwong,  
Lecturer, Ph.D.  
Email: Kanitha.t@chula.ac.th



อ.ดร. อินทวูธ สรรพวรสถิตย์  
Inthawoot Suppavorasatit,  
Lecturer, Ph.D.  
Email: Inthawoot.S@chula.ac.th

## Food Microbiology/ Biotechnology



รศ.ดร. สุวิมล เกียรติพิบูล  
Suwimon Keeratipibul,  
Associate Professor, Ph.D.  
Email: Suwimon.k@chula.ac.th



รศ.ดร. สุเมธ ตันตระเทียน  
Sumate Tantratian,  
Associate Professor, Ph.D.  
Email: sumate.t@chula.ac.th



ผศ.ดร. ชัยจิต ประทีชชัยวัฒนา  
Cheunjit Prakitchaiwattana,  
Assistant Professor, Ph.D.  
Email: cheunjit.p@chula.ac.th



ผศ.ดร. จันทรประภา อิมจงใจรัก  
Chanprapa Imjongjirak,  
Assistant Professor, Ph.D.  
Email: chanprapa@yahoo.com



อ.ดร. กิตติพงษ์ อัศตรกุล  
Kitipong Assatarakul,  
Lecturer, Ph.D.  
Email: kataicu@hotmail.com



อ.ดร. ศานต์ เศรษฐชัย  
Samsettachai,  
Lecturer, Ph.D.  
Email: samsettachai@yahoo.com

## Food Processing and Product development



รศ.ดร. นินนาท ชินประหัฐ  
Ninnart Chinprahast,  
Associate Professor, Ph.D.  
Email: Ninnart.c@chula.ac.th



ผศ.ดร. วรภา คงเป็นสุข  
Varapha Kongpensook,  
Assistant Professor, Ph.D.  
Email: varapha.l@chula.ac.th

## Food Packaging



รศ.ดร. อุบลรัตน์ สิริภัทราวรรณ  
Ubonrat Siripatravan,  
Associate Professor, Ph.D.  
Email: Ubonratana.S@chula.ac.th



อ.ดร. ธรรณุนท์ เจนจรัสกุล  
Theeranun Janjarasskul,  
Lecturer, Ph.D.  
Email: mayjanjaras@gmail.com

## Food Nutrition



อ.ดร. นฤธิดา โชติช่วง  
Nattida Chotechuang,  
Lecturer, Ph.D.  
Email: nattida.c.net@gmail.com



อ.ดร. ศิริมา พ่วงประพันธ์  
Sirima Puangpraphant,  
Lecturer, Ph.D.  
Email: sirima.pu@chula.ac.th





# Visiting Professors



**Professor Juan L. Silva,  
Mississippi State  
University, U.S.A.**



**Assistant Professor Cristina  
Alamprese,  
University of Mialn, Italy**

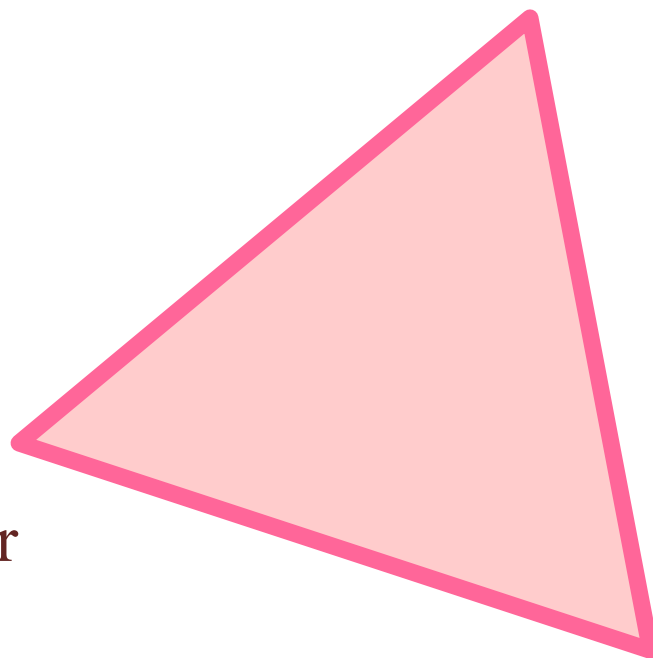


# Research Facilities



Samyan Center

Saraburi Center



Food Research  
and Testing Lab







# Research Facilities

## Samyan Center

- Food Processing Lab
- Food Chemistry Lab
- Food Microbiology Lab
- Food Quality Assurance Lab
- Special Research

## Saraburi Center

- Beverages
- Dairy
- Fermentation
- Canning
- Freezing
- Drying
- Frying
- Meat processing

## Food Research and Testing Lab

- Chemistry analysis
- Microbiology analysis
- Molecular biology analysis
- Physical analysis



# Samyan Centre



|                  |  |
|------------------|--|
| 10 <sup>th</sup> | Academic staff office                                |
| 9 <sup>th</sup>  | Graduate student and Packaging laboratories          |
| 8 <sup>th</sup>  | Administration office , computer room                |
| 7 <sup>th</sup>  | Quality assurance and product development laboratory |
| 6 <sup>th</sup>  | Food analytical laboratory                           |
| 5 <sup>th</sup>  | Food chemistry laboratory                            |
| 4 <sup>th</sup>  | Conference room, student lounge                      |
| 3 <sup>rd</sup>  | Food microbiology and biotechnology laboratory       |
| 2 <sup>nd</sup>  | Food processing laboratory                           |
| 1 <sup>st</sup>  |  |

 Teaching lab  
 Graduate lab





# Research Facilities



## Library (Faculty of Science)

- Link with over 35 libraries in the University
- Online access to foreign bibliographic databases
- >85,000 titles on science and technology

## Computer Center (Faculty of Science)

- hardware and networking equipment
- 1:10 for undergraduate students
- 1:5 for graduate students
- 1:2 for researchers and faculty



## Department of Food Technology

### International Collaboration





- 80 Universities : Food Sci/Tech program
- Food Science and Technology Association of Thailand (FoSTAT)
- Chaipattana Foundation under Royal Patronage
- Food and related companies / industries

## Department of Food Technology



# International Collaboration



**Thai-Japan International Joint Seminar** on High-quality Processing with Low Carbon Emission and Utilization of Local Marine and Agricultural Products, **TUMSAT**, Tohoku, Japan



Food Technology  
Chulalongkorn University

## Tokyo University of Marine Science, Japan





# International Collaboration



**Thai-Japan International Joint Seminar**



50<sup>TH</sup>  
Food Technology  
Chulalongkorn University

**Tokyo University of Marine Science, Japan**





# International Collaboration



**Activities for exchange students from TUMSAT, Japan, at Kung Kraben Bay  
Royal Development Study Center**



**Food Technology  
Chulalongkorn University**

**Tokyo University of Marine Science, Japan**





# International Collaboration

**Activities for exchange students from Fukui University, Japan**





# International Collaboration



**Students from Singapore Polytechnic  
visit**



**Singapore Polytechnic, Singapore**





# International Collaboration

**International Joint Seminar on Food Technology and Quality Management with Wageningen University, The Netherlands**





# International Collaboration

**Prof. Richard Archer from Massey University, New Zealand discussed with our faculties for future collaboration**







# International Collaboration

**Professor Dr Keith Cadwallader, UIUC, USA visit and discuss for future collaboration**



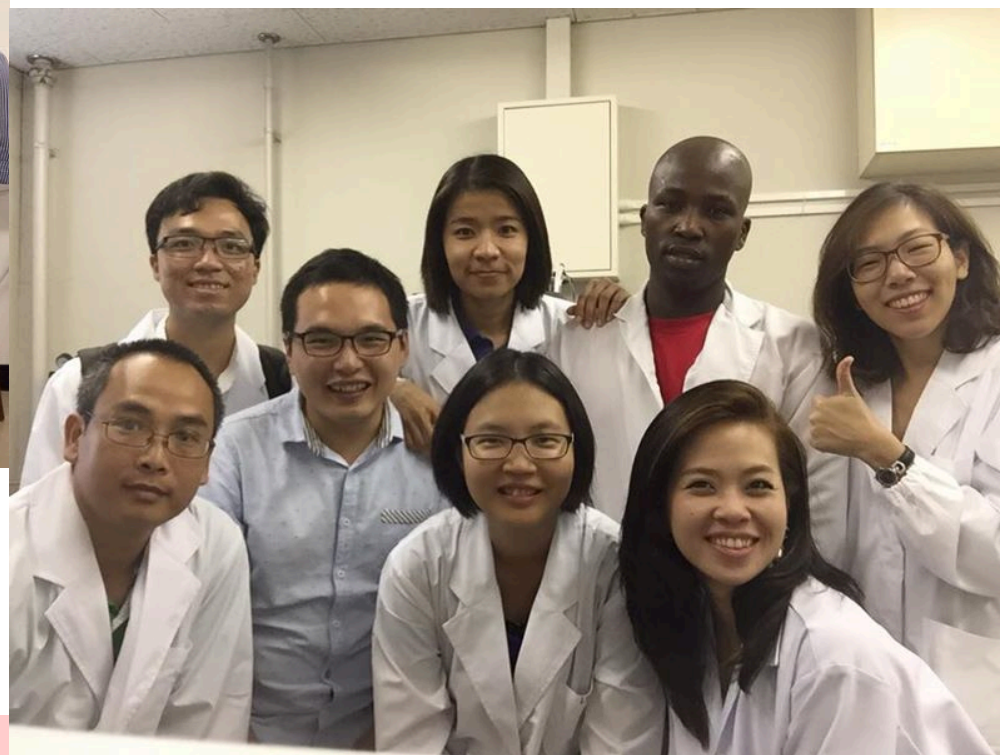
**University of Illinois-Urbana, Champaign, USA**





# International Collaboration

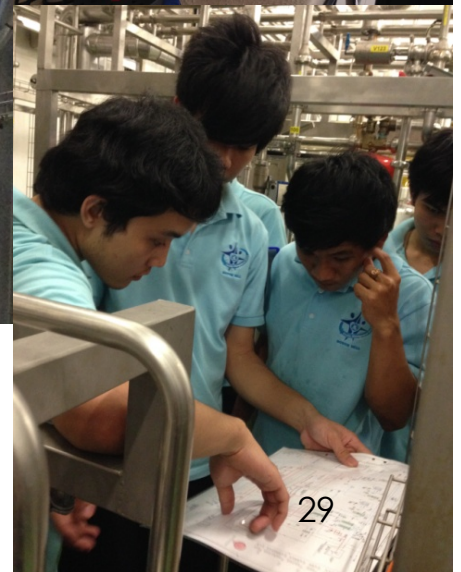
## Sakura Science Program, Kagawa University, Japan -Exchange young scientists







# Training



**Collaborating with Dutch Mill** to develop a program on creating milk and dairy products processors in order to leverage the capability and develop the potential of operators in Thai industry





# Training



## Retort Supervisors :

Training center : Low acid foods training for food operators





# Graduate study : **International Program**

## **Master of Science in Food Science and Technology : 2-year program**

### **Application**

|                                 |                    |
|---------------------------------|--------------------|
| First Semester (start August)   | February - May     |
| Second Semester (start January) | August - September |

### **Scholarships**

|  |
|--|
| Graduate scholarship for supporting the thesis   |
| Research assistant and supporting scholarships from the department and university graduate section |

### **Admission Requirement**

|               |  |
|---------------|--|
| English score | TOEFL >530 (PBT), >197 (CBT), or >71 (IBT)<br>IELTS >6.0 |
|---------------|--|

### **Course Curriculum (39 credits)**

|                  |            |
|------------------|------------|
| Required courses | 9 credits  |
| Elective courses | 12 credits |
| Thesis           | 18 credits |



<http://foodtech.sc.chula.ac.th>



**Department of Food Technology**

Faculty of Science Chulalongkorn University

ภาควิชาเทคโนโลยีทางอาหาร, คณะวิทยาศาสตร์  
จุฬาลงกรณ์มหาวิทยาลัย

Department  
About department

Research  
About research

Faculty/Staff  
Faculty and Supporting Staff

Courses  
Study programs

Admissions  
Admission news

News & Activities  
Activity news

TH | EN



News  
& Activities

[view more >>](#)







Thank you  
for  
your attention

*50<sup>th</sup> ANNIVERSARY ...  
The New Era of Food Technology Chula*

